



INDOFINE Chemical Company, Inc.

121 Stryker Lane, Bldg. 30, Suite 1 • Hillsborough, NJ 08844 • U.S.A.

Phone: (908) 359-6778 • FAX: (908) 359-1179

website: www.indofinechemical.com

e-mail: chemical@indofinechemical.com

CERTIFICATE OF ANALYSIS

Catalog Number: D-430

Product Name: **7,3'-DIMETHOXYFLAVONE**

CAS Number: [6802-49-9]

Lot Number: 89001

Chemical Formula: C₁₇H₁₄O₄

Molecular Weight: 282.30

Melting Point: 153-154°C

Appearance: White powder

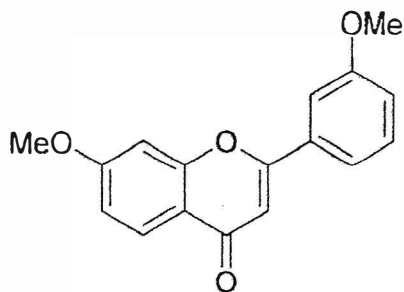
Solubility: Soluble in Chloroform

TLC: Hexane : Ethyl acetate (1:1)

NMR Spectrum: Enclosed (Confirms to the structure)

Storage: Cool dry place

Purity: 99.82% (HPLC)





INDOFINE Chemical Company, Inc.

121 Stryker Lane, Bldg. 30, Suite 1 • Hillsborough, NJ 08844 • U.S.A.

Phone: (908) 359-6778 • FAX: (908) 359-1179

website: www.indofinechemical.com

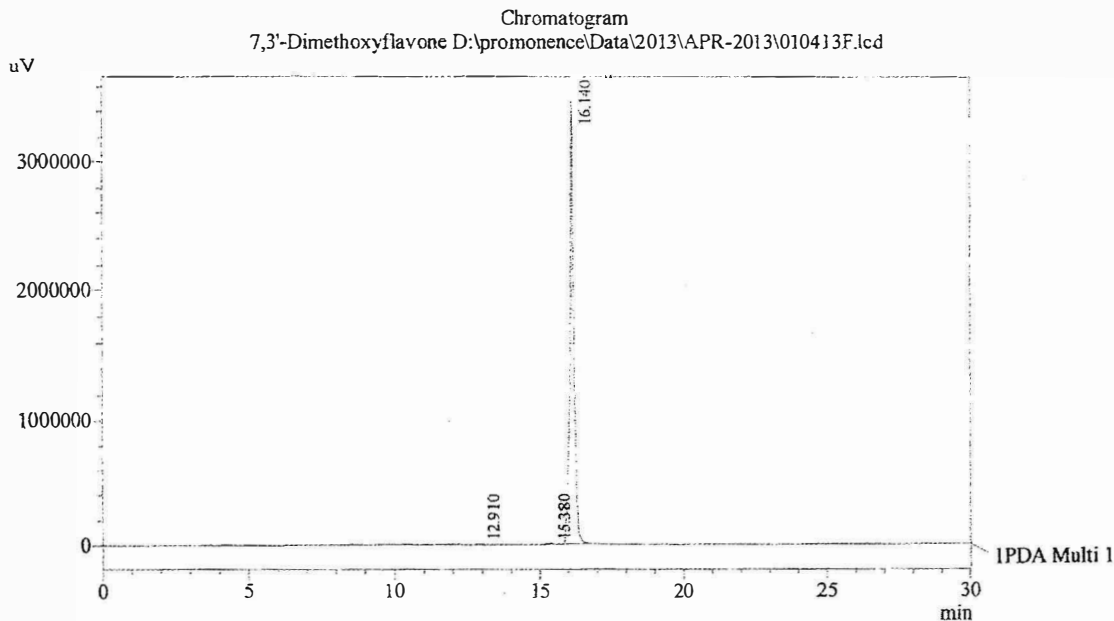
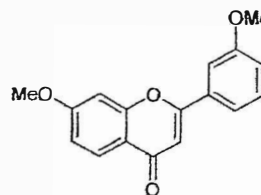
e-mail: chemical@indofinechemical.com

HPLC ANALYSIS

Acquired by : Sanjeev
Sample Name : 7,3'-Dimethoxyflavone
Sample ID : Lot No:- 89001
Injection Volume : 20 uL
Data Filename : 010413F.lcd
Method Filename : Linear Gradient.M.lcm

Catalog No.: D-430
Product name: 7,3'-Dimethoxyflavone
Lot No.: 89001

Column : LUNA C-18(2), (250mm x4.6mm 5.0µ)
Flow : 1.000 mL/min
Mobile Phase : A(0.05% TFA in water) B(Acetonitrile)
0.01 90 10
12.0 10 90
20.0 10 90
23.0 90 10
30.0 90 10



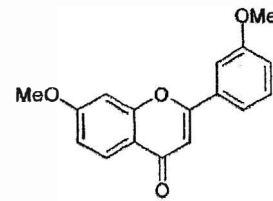
PeakTable

PDA Ch1 254nm 4nm

Peak#	Name	Ret. Time	Area	Area %	Relative Retention Time
1	RT:12.910	12.910	11512	0.04	0.80
2	RT:15.380	15.380	48057	0.15	0.95
3	7,3'-Dimethoxyflavone	16.140	32214118	99.82	1.00
Total			32273687	100.00	



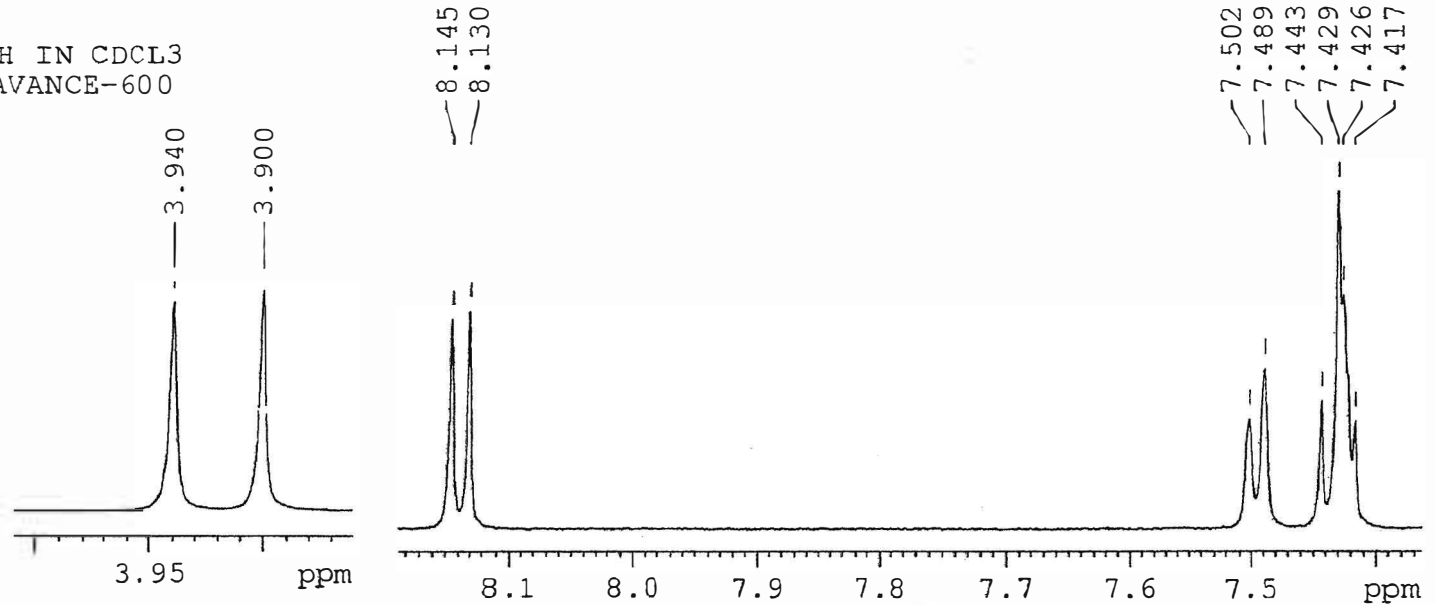
INDOFINE Chemical Company, Inc.
121 STRYKER LANE
BLDG. 30, SUITE 1
HILLSBOROUGH, NJ 08844



Catalog No.: D-430
Product name: 7,3'-Dimethoxyflavone
Lot No.: 89001

SOVENT CDCL3
NS 16
DS 0 1H IN CDCL3
SWH 9803.922 Hz AVANCE-600
FIDRES 0.326819 Hz
AQ 1.5299480 sec
RG 2050
DW 51.000 usec
DE 6.00 usec
TE 298.2 K
D1 1.50000000 sec
TD0 1

==== CHANNEL f1 =====
NUC. 1H
P1 8.30 usec
PL1 -1.00 dB
PL1F 15.17893314 W
SFO: 600.3345228 MHz
SI 32768
SF 600.3300134 MHz
WDW EM
SSB 0
LB 0.30 Hz
GB 0
PC 1.00



7.080
7.076
7.066
7.063

7.005
7.001
6.990
6.986
6.972
6.968

6.758

